



Multiple Application Platform Server

MAPS 5.1.2 Release Guide

Product version 5.1.2

Last updated 9/29/2016

Trademark, Publishing Statement, and Copyright Notice

© 1998-2016 Evisions, Inc. All rights reserved.

This software and related documentation are provided under a license agreement containing restrictions on use and disclosure and are protected by intellectual property laws. No part of this document may be reproduced, stored in or introduced into a retrieval system, or transmitted in any form or by any means (electronic, mechanical, photocopying, recording, or otherwise), or for any purpose, without the express written permission of Evisions, Inc.

The information contained herein is subject to change without notice and is not warranted to be error-free. Product features referenced herein for a period of time may not match product contents. Evisions, Inc. does not warrant that the functions contained in the software will meet your requirements or that the operation of the software will be uninterrupted or error free. Evisions, Inc. reserves the right to make changes and/or improvements in the software without notice at any time.

This software and documentation may provide access to or information on content, products, and services from third parties. Evisions, Inc. and its affiliates are not responsible for and expressly disclaim all warranties of any kind with respect to third-party content, products, and services. Evisions, Inc. and its affiliates will not be responsible for any loss, costs, or damages incurred due to your access to or use of third-party content, products, or services. Evisions, Inc. does not endorse the content or developer of any products or web sites mentioned.

All information in this guide is designed for instructional purposes only. Evisions, Inc. makes no guarantees regarding the accuracy or performance of any techniques used in this guide. Software configurations and environments may vary, and some techniques used in this guide may not operate efficiently under all configurations. This guide may contain examples of various technologies or products, which are the sole property and responsibility of their creators.

Trademarks are the property of the respective owners for any products mentioned herein.

Table of Contents

- Table of Contents** **3**
- What's New in MAPS 5.1.2?** **4**
 - MAPS Updates 4
 - Product versions 4
 - Installation 4
 - 1. Prepare test environment and ensure current backup 4
 - 2. Check for updates 4
 - 3. Allow update process to complete 4
 - 4. Verify the latest version is installed 5
- Getting Help** **6**

What's New in MAPS 5.1.2?

Evisions is pleased to announce the release of MAPS version 5.1.2, which is required for some of the changes made in the IntelCheck 3.5.5 release. Please refer to the [IntelCheck release documentation](#) for a detailed list of enhancements and resolved issues. There are no other changes to MAPS in this release.

We appreciate the feedback received from all of our users. Our products would not be what they are today without your continued support. If you have any comments or suggestions, please do not hesitate to [open a HelpDesk ticket](#) and let us know.

MAPS Updates

MAPS 5.1.2 is an update to the MAPS service that is required for some of the changes made in IntelCheck 3.5.5. There are no other changes in this version of the MAPS service.

[Product versions](#)

The latest version of MAPS included in this release is:

- MAPS service 5.1.2.1327

Installation

[1. Prepare test environment and ensure current backup](#)

We highly recommend installing updates in a test environment before applying them to your production environment. You should make sure that a current backup is available in case of any unforeseen issues. To create a full backup of your MAPS environment, go to the **Server** -> **Backups** screen in MAPS and click **Backup Now**.

[2. Check for updates](#)

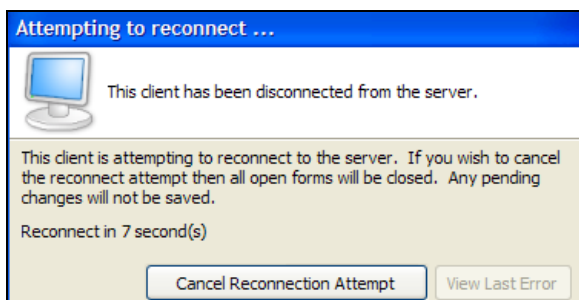
Click the **Check for Updates** button in the MAPS Configuration tool to view available updates.

If you are not already running MAPS 4.x, please refer to the [MAPS 4.0 Upgrade Guide](#) for instructions prior to proceeding with this upgrade.

It is possible to apply updates when users are on the system; however, to avoid the possibility of losing unsaved work we recommend applying updates during off hours.

[3. Allow update process to complete](#)

When applying updates to the MAPS service you will be temporarily disconnected from the server:



The update process may take a few minutes to complete. **Do NOT cancel the reconnection attempt or manually restart the server.** You will automatically be reconnected to the server once the update has been applied.

[4. Verify the latest version is installed](#)

To ensure that you are on the most current version, continue clicking the **Check for Updates** button and applying the updates until no new updates are available.

[Please Provide Us with Your Feedback!](#)

As always, we welcome any [feedback or suggestions](#) you may have. We very much appreciate your thoughts and suggestions, so please keep the great ideas coming!

Getting Help

For information on using the software, please refer to the in-product Help, which contains detailed information on all aspects of the product.

If you are having problems with the installation or configuration, you can search our knowledge base of common issues and their resolutions at <http://helpdesk.evisions.com>. If you are unable to find the solution, submit a HelpDesk request with a detailed explanation of the problem you are experiencing.

Please do not hesitate to contact the Evisions HelpDesk if any questions or problems arise. We are here to help you and want to ensure your success.

If you find that areas of this documentation could benefit from additional detail or clarification, please let us know. We are constantly trying to improve the installation process to make it as easy as possible.